

33 Middle Road, Park Gate, Southampton, Hampshire, SO31 7GH

Tel: 01489 885500

admin@brookindependent.co.uk

www.brookindependent.co.uk

BROOK
INDEPENDENT
ESTATE AGENTS



42 Kingcup Avenue

Locks Heath, Southampton, SO31 6XG

£329,950



Originally built in the mid-1980s by Westbury Homes, this attractive neo-Georgian style semi-detached property is ideally positioned at the end of a quiet cul-de-sac just south of the Locks Heath District Centre. The home offers a bright and airy atmosphere throughout, complemented by well-proportioned rooms and a number of appealing features. It would make an ideal purchase for a young family or an investor, with an estimated rental income of approximately £1,500 per calendar month.

Kingcup Avenue comprises around forty detached and semi-detached homes and forms part of the Priory Park Estate, developed in the mid-1980s. The property enjoys a convenient location close to both junior and senior schools and is less than half a mile from the main shopping centre at Locks Heath. The centre provides a wide range of amenities including shops, a pub, takeaway outlets and a doctor's surgery.

Overall, this is a well-located traditional semi-detached home offering excellent value in the current market and is offered with full vacant possession.



Entrance Hallway

Lounge 14'11 x 11'7 (4.55m x 3.53m)

Kitchen/Diner 14'10 x 10' (4.52m x 3.05m)

Bedroom One 14'1 x 8'3 (4.29m x 2.51m)

Bedroom Two 11'6 x 8'3 (3.51m x 2.51m)

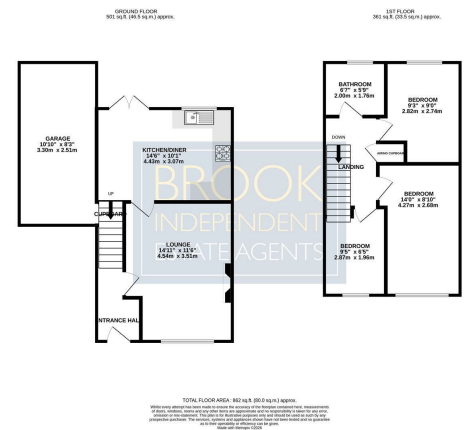
Bedroom Three 8'6 x 6'5 (2.59m x 1.96m)

Bathroom 6'5 x 5'5 (1.96m x 1.65m)

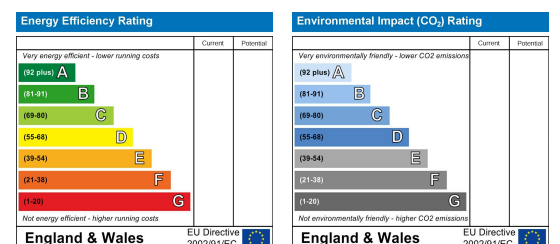
Area Map



Floor Plans



Energy Efficiency Graph



These particulars, whilst believed to be accurate are set out as a general outline only for guidance and do not constitute any part of an offer or contract. Intending purchasers should not rely on them as statements of representation of fact, but must satisfy themselves by inspection or otherwise as to their accuracy. No person in this firm's employment has the authority to make or give any representation or warranty in respect of the property.